

# FARO Box

Installation Guide



# FARO Box 18.5

The information and guidance in this manual is currently the most up to date available. FARO Technologies, Inc. assumes no liability whatsoever for the use of this software, infringement of patent rights or rights of any third party that result from the use of this software.

FARO Technologies, Inc. reserves the right to make changes to this software, in order to bring about technical improvements in the software, at any time and without any prior notice.

No part of this documentation may at any time or in any form whatsoever be reproduced (printed, copied or the like), or edited, reproduced or distributed in any electronic system or manner without the express prior written consent of FARO Technologies, Inc..

Release: November 2017

## Contact

FARO Technologies, Inc.

[www.faro.com](http://www.faro.com)

[www.knowledge.faro.com](http://www.knowledge.faro.com)

## Trademarks

AutoCAD®, AutoCAD® LT and Revit® are registered trademarks of Autodesk Inc.

BricscadTM is a registered trademark of Menhirs NV.

# What's important for us

Dear FARO users,

We thank you for the trust that you have placed in us and wish you lots of luck and pleasure when using your FARO Box product.

Please don't be afraid when you have questions or problems to take advantage of our support team. Your questions and suggestions on the whole family of FARO products are very important to us and are always welcome. The products that we offer are significantly influenced by the ideas and creativity of the users.

With this in mind, we are looking forward to working together with you with our product FARO Box.

# Contents

1 What is the FARO Box .....	5
2 Installation and Start .....	6
2.1 System requirements .....	6
2.2 Installing FARO Box .....	6
2.2.1 Removal of a product that is older than version 15 .....	7
2.2.2 Installation .....	8
2.3 Installing the dongle .....	9
2.4 Setting up a Network Licence .....	11
2.4.1 CodeMeter Network Licence .....	11
2.5 Setting up the FARO Box in AutoCAD and AutoCAD LT .....	14
2.5.1 Product configuration .....	14
2.5.2 Ribbon or classic menu .....	19
2.6 Manage CodeMeter licences .....	19
2.6.1 Check the licence status .....	19
2.6.2 Request an activation file .....	21
2.6.3 Licence activation / update .....	22
2.6.4 Verifying the time clock of the dongle .....	22
3 FARO Box Command Reference .....	24
Getting Started ... ..	25
Product Manager .....	26
Version Manager .....	30
Licence management ... ..	31
About .....	33
4 Licence Agreement .....	34

# 1 What is the FARO Box

The FARO Box is a collection of all of the FARO AutoCAD applications in a single common installation process. The FARO Box contains all of the available products of TachyCAD, DistToPlan, PhoToPlan, hylasFM, MonuMap and PointSense.

You as a user will probably ask why we have decided to bring together all of these products into one box.

The individual FARO Box products are, in terms of their functionality, specifically tailored to satisfy the needs of the various groups of users, however, the products share, to a certain extent, common functions and resources. Many of our users work every day with more than one FARO AutoCAD application. The FARO Box allows us, as software developers, to achieve the best possible links between the various products, without you as user having to battle with compatibility or configuration problems. This allows you as the user to work much more comfortably with several products in parallel, since you have only one installation to look after and you can, at any time, switch between various products. Also the testing of products that you have not yet purchased is made significantly simpler. There is no new installation of any software necessary, but just simply select the FARO Box product and request a trial licence.

FARO Box also simplifies working in a network with multiple licences. You can now precisely specify for each workstation, which licence can be used and with which priority.

We have tried, with the FARO Box, for you as the user, to organise your work, in a much more comfortable and simpler fashion. At the same time it allows us, as software developers, now and in the future to better and more effectively align the individual products with each other.

## 2 Installation and Start

### 2.1 System requirements

The FARO programs DistToPlan, TachyCAD, PhoToPlan, hylasFM, MonuMap and PointSense are all part of the FARO Box and can be embedded as AutoCAD applications in the following versions of AutoCAD:

	AutoCAD 2015 - 2018	AutoCAD LT 2015 - 2018
DistToPlan	✓	✓
TachyCAD	✓	✓
PhoToPlan	✓	✓
hylasFM	✓	✓
MonuMap	✓	✓
PointSense	✓	⊘

The FARO software VirtuSurv is a stand-alone **Windows program**, which can work together with - along with other Windows programs - AutoCAD (LT) 2015-2018 or BricsCAD V15 -V18 (64 bit).

The FARO Box supports the following **operating systems**:

Windows 7 / 8 / 8.1 / 10 (64 bit)

Please take note that FARO cannot offer any support for combinations of an AutoCAD version and an operating system which are **not** supported by Autodesk.

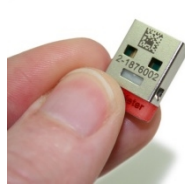
### 2.2 Installing FARO Box

The installation of the FARO Box is comprised of several steps that must be carried out in sequence. Administrator privileges are required for the installation.

**Note:** Please ensure that the hardware protection (CodeMeter dongle) that you have already received is not yet plugged in, as it can lead to problems when trying to identify the hardware.



CodeMeter USB stick



CodeMeter mini USB-stick



CodeMeter ExpressCard

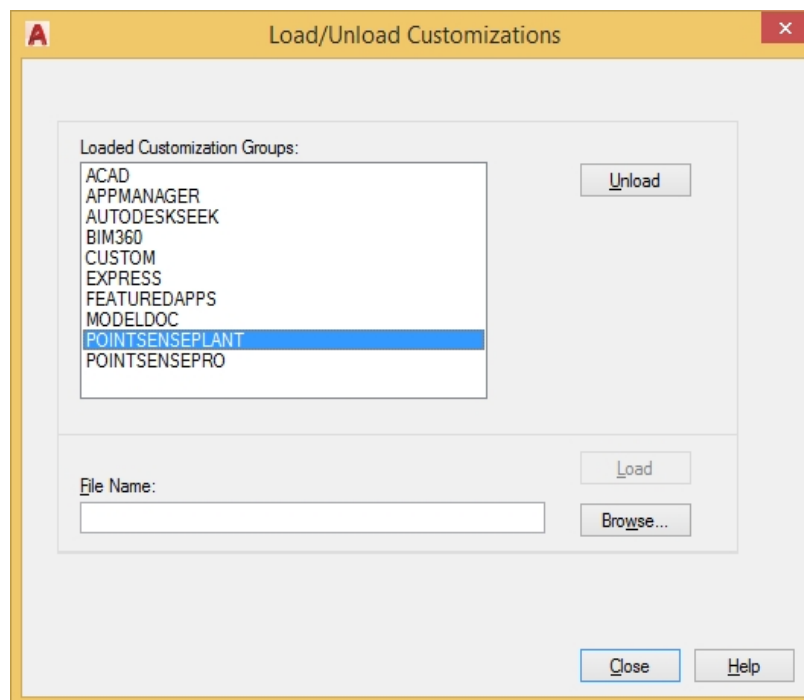
Examples of the CodeMeter dongle

## 2.2.1 Removal of a product that is older than version 15

In the case where you already have previous versions of FARO applications installed on your computer, first remove them from your AutoCAD (LT) environment.

- Remove the appropriate product menus (e.g. POINTSENSEPLANT) by entering the command "menuload" in the command <sup>1</sup> The following dialogue box appears.

Load/unload Customisations → Loaded Customisation Groups: [Product name] →  
Unload → Close



- Remove the directory entry of the old versions (e.g. PointSense) from the search path for the support files. Enter the command "config" in the comm<sup>2</sup> The following window is

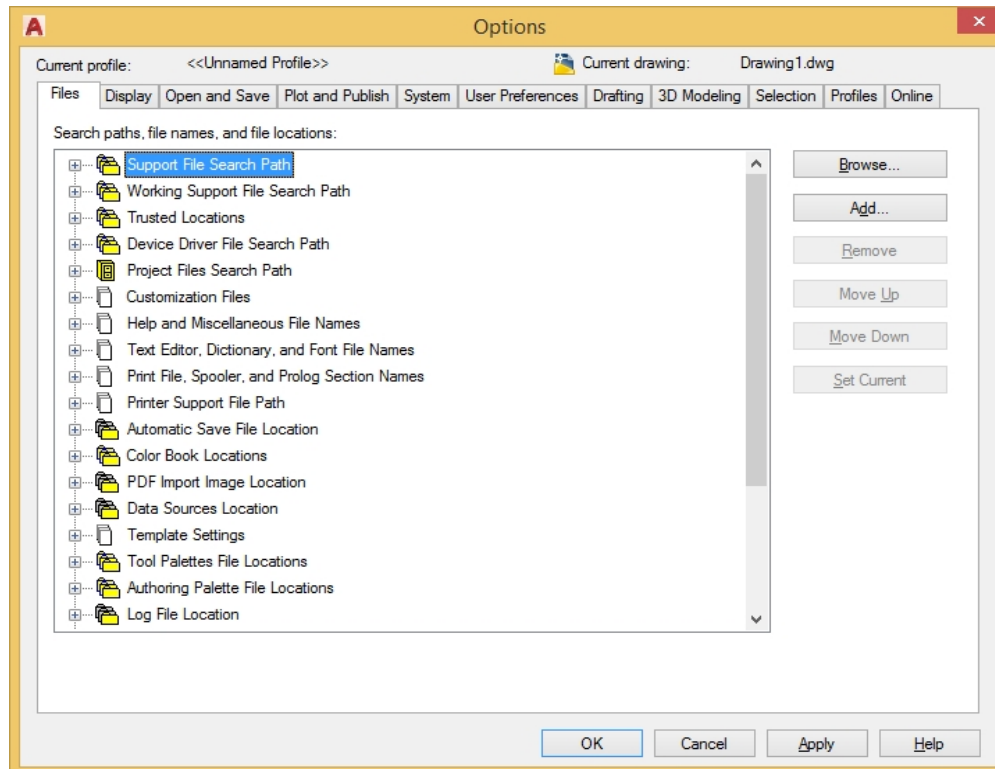
---

<sup>1</sup>line.

<sup>2</sup>and line.

displayed. Remove the support file path.

Options → Files → Support File Search Path: Path for the Product → Remove → OK



- Close AutoCAD.
- **Only when using AutoCAD LT:** Run the file LTUNINST.EXE, to be found in the folder of your previous installation. Administrator privileges are required to do this.
- Start AutoCAD again. After the new start all products are no longer embedded.

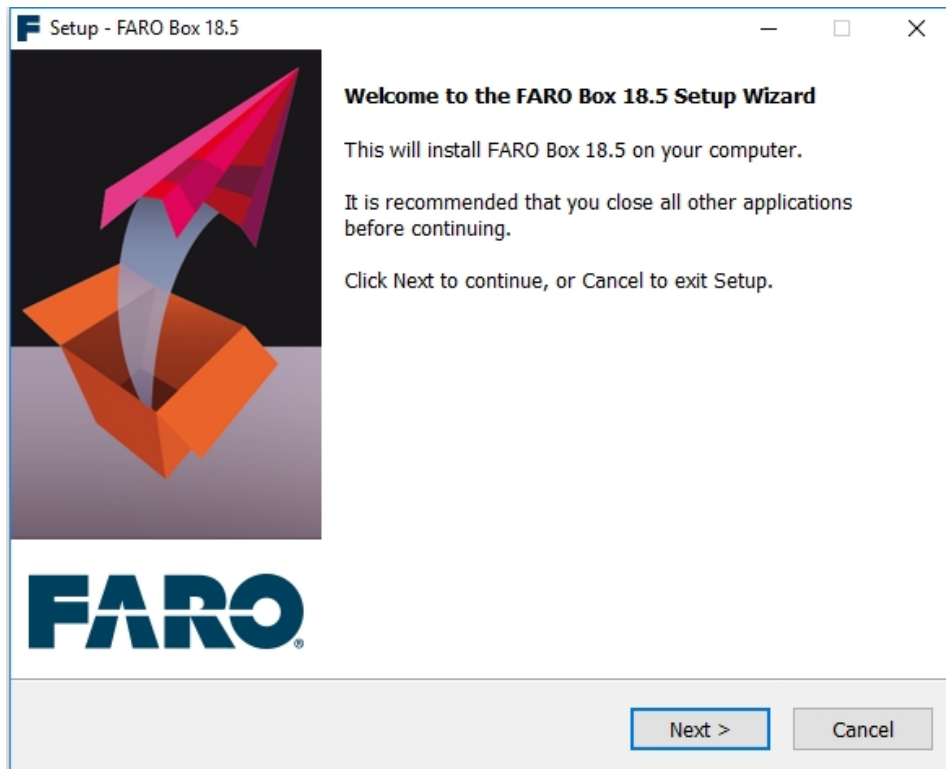
## 2.2.2 Installation

The current setup files of the FARO Box products can also be downloaded from the FARO internet site:

[setups.faro3dsoftware.com](http://setups.faro3dsoftware.com)

Run the setup file by double clicking it and then follow the instructions of the installation wizard. The selection of other programs in the FARO Box can always be done at a later point in time with the → **Product Manager**.





During the installation process you will be requested to select the AutoCAD version for which you want to install the FARO Box.

Should you want to install several versions **of a** FARO Box, you must create a separate folder for each version. Thereby you can use different versions (e.g. for AutoCAD 2015 and 2018) in parallel. The setup wizard helps you to do this.

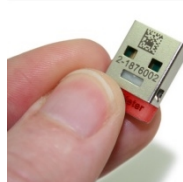
If you want to use several FARO AutoCAD applications in parallel during a single AutoCAD session you can, after installing the FARO Box and using the Product Manager, very easily embed them or remove them from AutoCAD.

## 2.3 Installing the dongle

The FARO software products are protected against unlawful use by a dongle. This so called CodeMeter is available as a USB stick, PC card, SD card and ExpressCard.



CodeMeter USB stick



CodeMeter mini USB-stick



CodeMeter ExpressCard

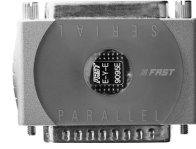
Some of the previous versions of FARO products were supplied with a dongle of the type **Aladdin** Hardlock. This was available as a USB stick, PC card or as a plug for the parallel port. They can, of course, still be used with the FARO Box products.



Hardlock USB stick



Hardlock PC card



Hardlock parallel port

The driver software for the dongle is automatically installed during the setup.

By the delivery of the software the dongle contains no activated licence file! Please download your current licence file from the following web page:

[license.faro3dsoftware.com](http://license.faro3dsoftware.com)

You can find the serial number on your dongle.

Now connect the dongle to the appropriate port for the type of dongle being used. Thereafter the message window "AutoPlay" might be displayed: Close the window without selecting any option or select "Do not execute any action".

When starting AutoCAD with an embedded FARO application, the dongle will be automatically recognised and you can immediately start using the commands of the application.

With a perpetual licence the dongle will function without having to do anything else. With a time limited licence the dongle will need an internet connection, at regular intervals, in order to verify its internal time clock. If this does not happen within a specified time frame (e.g. no direct internet access, which will happen regularly when on site) the licence will no longer be recognised until the time clock has been updated. The update of the verified time is independent of the imported licence information.

With a time limited licence please ensure before starting work with our software that the verified time clock of the dongle is up to date. Follow the instructions in section **2.6.4** .

The licence status that is saved on the dongle can be accessed using the application command **→ Licence management ....**

To manage the licences saved on the dongle or for setting up a network dongle please read the sections **2.4** and **2.6** .

## 2.4 Setting up a Network Licence

### 2.4.1 CodeMeter Network Licence

You can also use your CodeMeter-Dongle over a network. The dongle should be plugged into any computer in the local network (it is advantageous to do this on a server that is always available) and FARO Box is installed on any of the other computers in the network. This has the advantage that the program can be used on several computers in the local network, without having to unplug the dongle from one computer and plug it in on another. But then only so many employees can use the software at the same time, as there are activated licences on the dongle. For the commissioning of the software the following steps are necessary:

#### On the server computer

A server can be any computer, even a previous client. If no FARO Boxproduct is installed on the computer, you will need at least the CodeMeter software to manage the licenses.

Log on with administrator privileges. Then download the "CodeMeterRuntimeXXX.exe" from following web page under section "Dongle" and run the file:

[service.faro3dsoftware.com/supportfiles](http://service.faro3dsoftware.com/supportfiles)

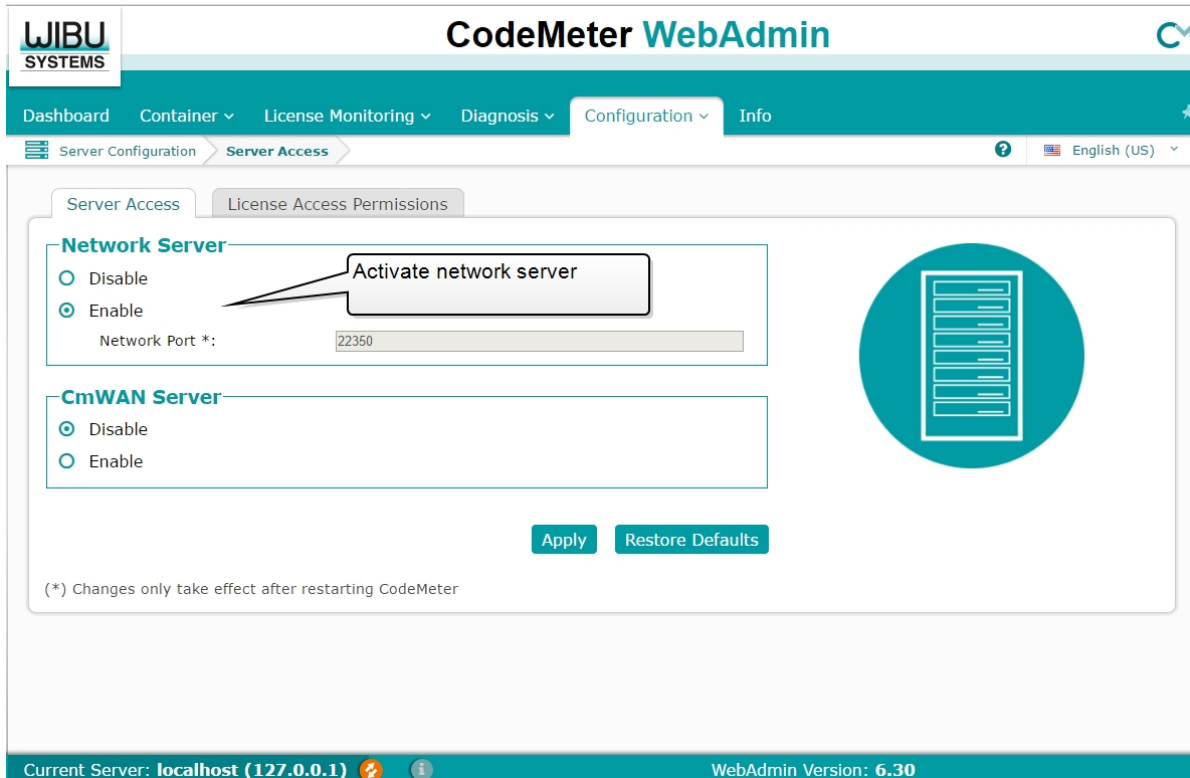
This can be installed for 64-bit and 32-bit systems. The "CodeMeter Control Center" is now installed.

Now plug in the dongle on the server computer and start the CodeMeter-Control Center. The quickest way is by clicking the symbol in the Windows task bar:



A dialogue box opens with status information about the dongle. Click lower right on **WebAdmin**, to configure the dongle.

Your internet browser opens and displays the configuration page "CodeMeter WebAdmin". Then click on "Configuration" – "Server".



Activate the option "Network Server".

All other settings here can by default be left as they are. Click on **[Apply]** and close WebAdmin by exiting your browser.

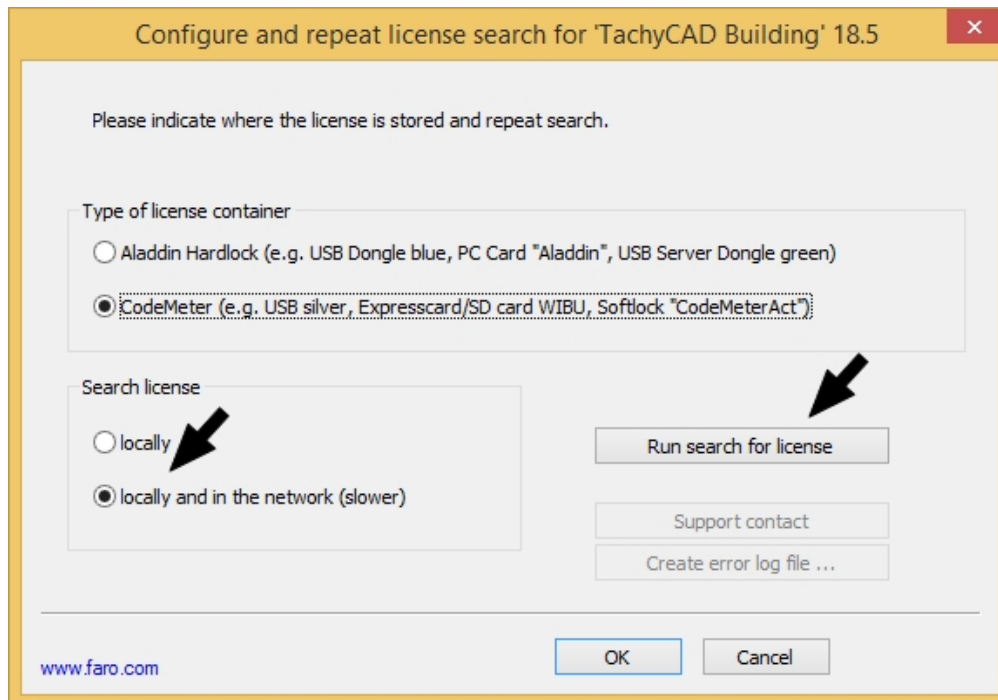
**Note:**

Please ensure that the port used on this computer is not blocked by a firewall. If need be you must deactivate your firewall or you must release this port in the firewall settings.

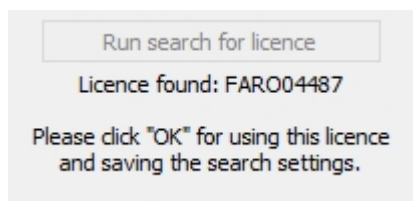
If you want to use a Linux computer as the server you can download the relevant software packet (CodeMeterRuntime Packet) from [www.wibu.de-de](http://www.wibu.de-de).

**On the client computer (the workstation)**

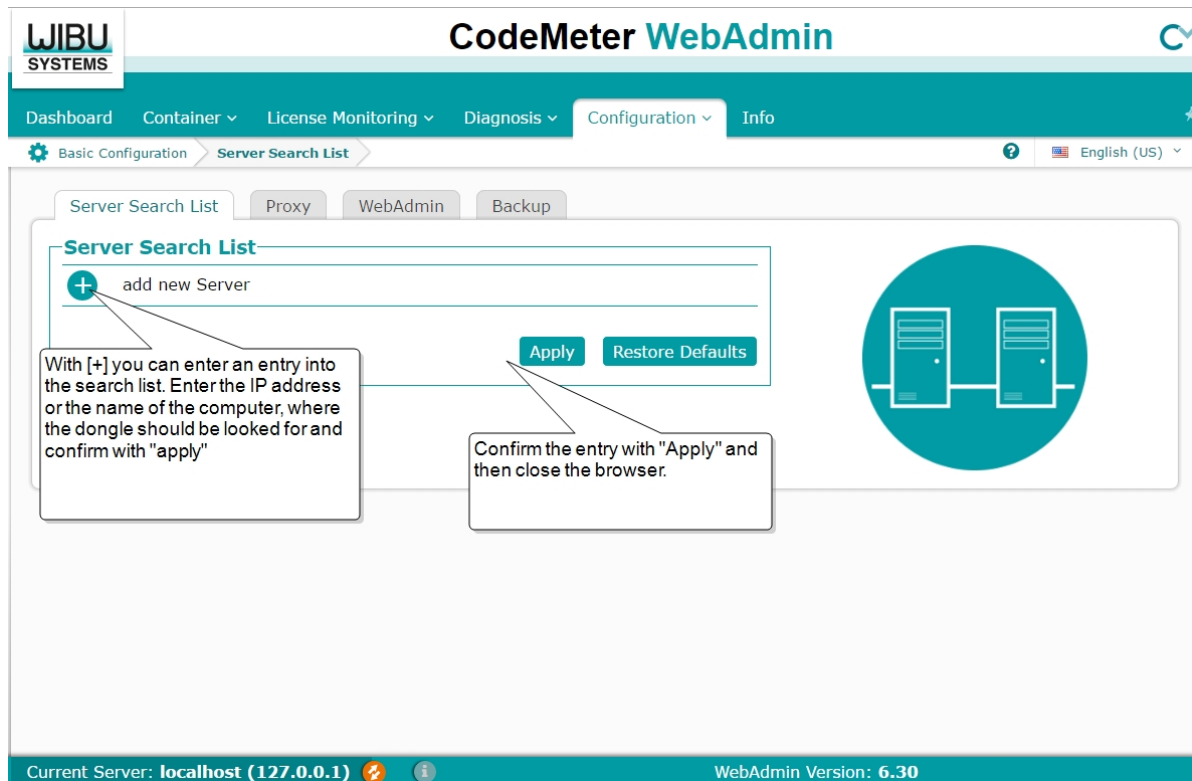
Start AutoCAD and configure FARO Box products in accordance with the instructions in section 2.5 The settings for the licence search are to be found on the second page of the → **Product Manager**.



There you need to select the option "locally and on the network (slower)" and then click on **[Run search for licence]**. The network dongle should now be recognised.



If the server has not yet been found, you can enter in WebAdmin on the client computer, either the IP address or the computer name which should be used when searching for the computer. The CodeMeter Control centre has already been installed during the setup of the FARO Box of

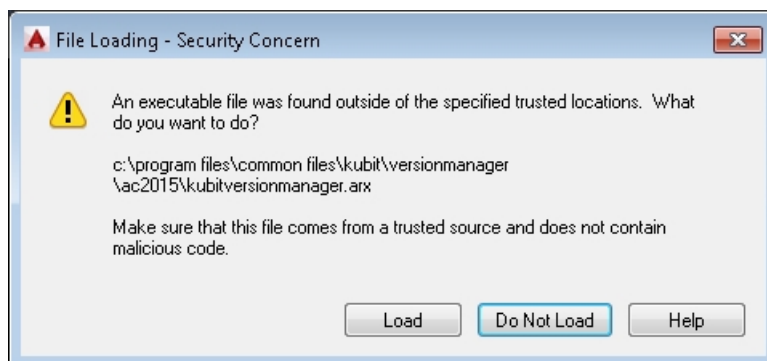


On the client computer also it must be ensured that no firewall hinders the connection to the server. To test the connection enter the following into your browser <http://servername:22350>. You should now be able to see the WebAdmin page of the server. If this succeeds then your FARO Box product should also work correctly.

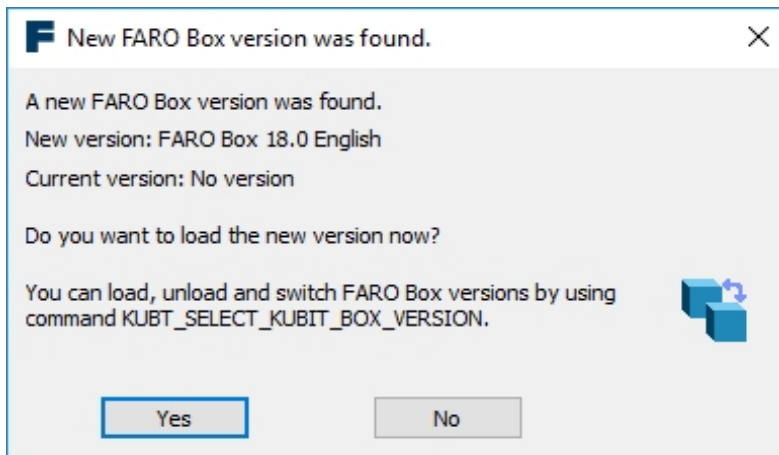
## 2.5 Setting up the FARO Box in AutoCAD and AutoCAD LT

### 2.5.1 Product configuration

After a successful installation you can start AutoCAD (LT). Should the following security message be displayed you can simply confirm it by clicking **[Load]**.



Should a message be displayed saying that a new FARO Box version has been found and asks if you want to load it, Confirm the message with [Yes]. Confirm you adaptation with **[YES]**.

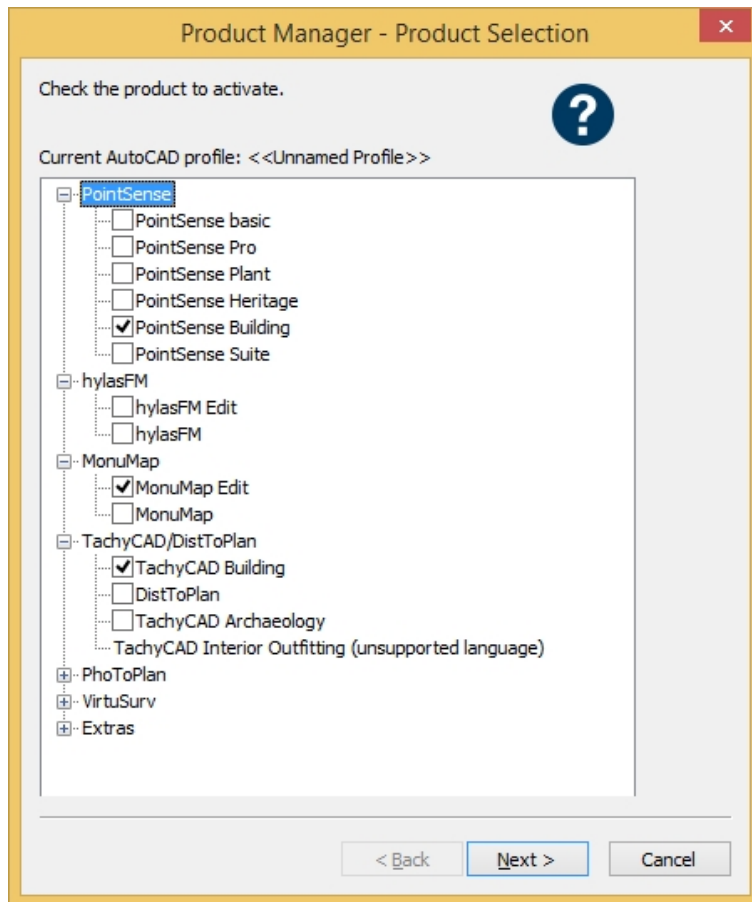


Should you want to use several versions of FARO Box, you can at any time by using the → **Version Manager**, switch back and forth between the various installed versions.

Should the message not be automatically displayed then please start the → **Version Manager** from the AutoCAD (LT) command line (command: KUBT\_SELECT\_KUBIT\_BOX\_VERSION).

Your FARO Box product has now been successfully embedded in AutoCAD (LT) and is ready to be used. The associated menus will be automatically loaded. These can be seen in the automatically inserted tool bars or on the ribbon or the corresponding entry in the menu bar.

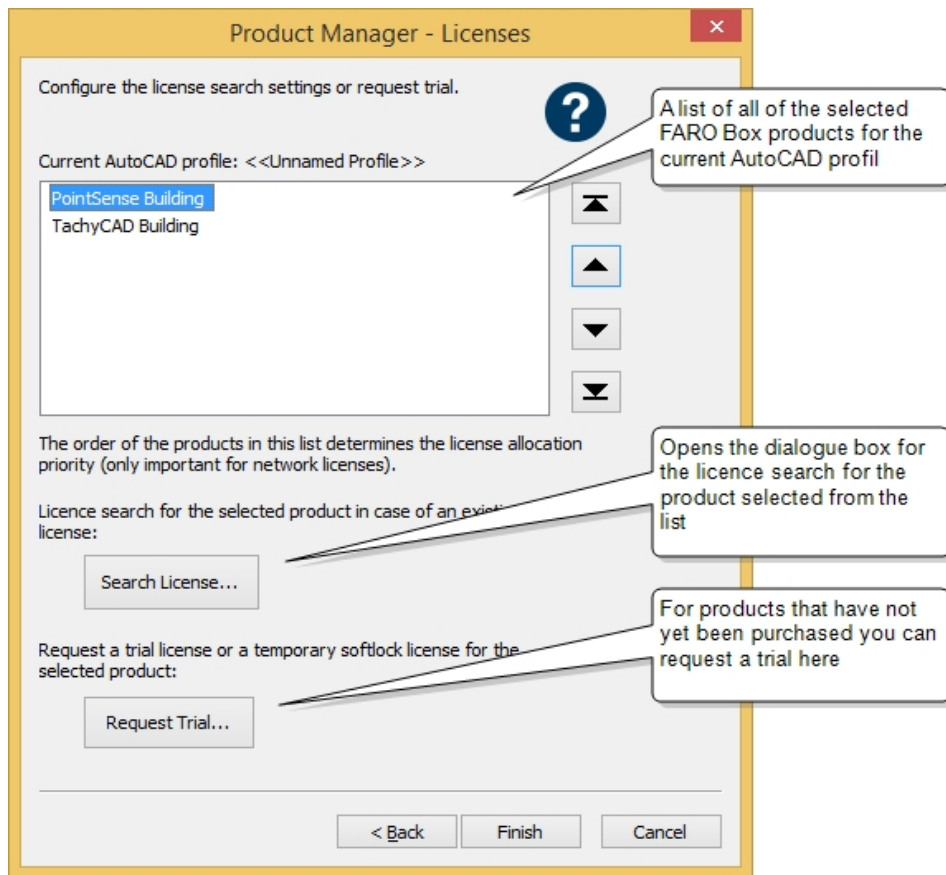
You can embed further FARO Box products into your AutoCAD (LT) by using the → **Product Manager**. After starting the Product Managers the following dialogue box is displayed:



Select the products that you have purchased from the list and confirm the selection with **[Next >]**.

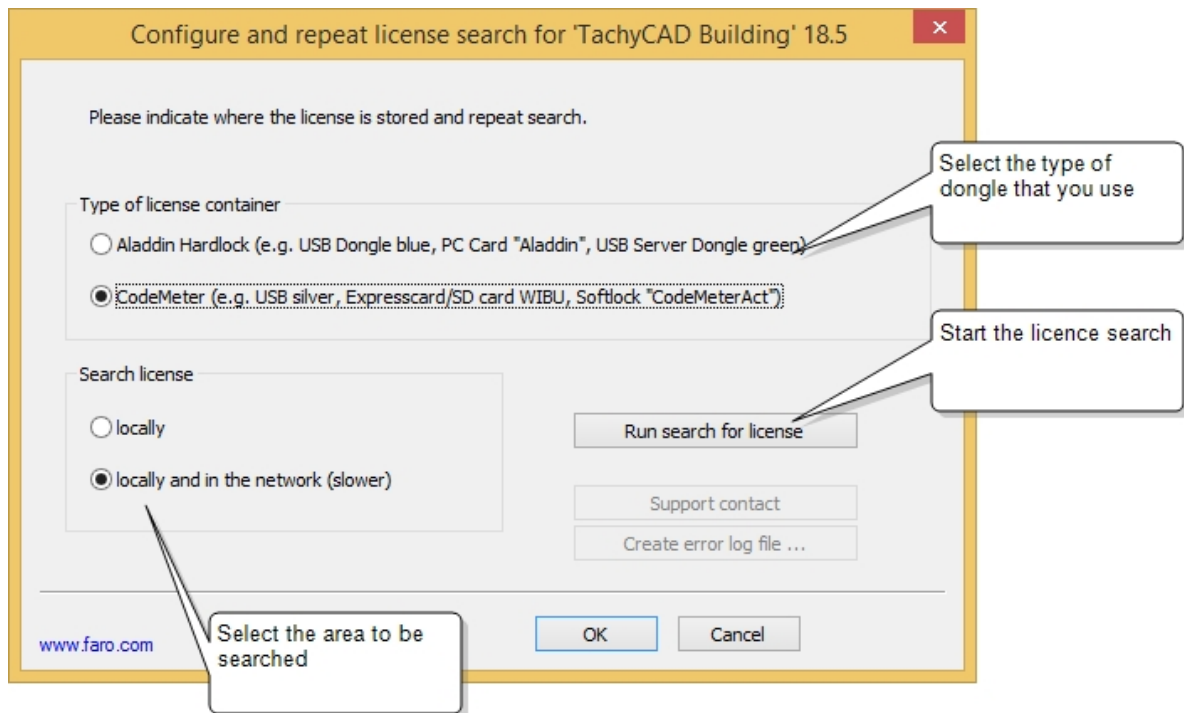
On the second page of the → **Product Manager** you can configure the licence search for each of the selected FARO Box products or you can request a test licence for products that you have not yet purchased.





In the pick list you will find all of the FARO Box products that you have selected for the current AutoCAD profile. The order of the products in the list can be changed by using the buttons to the right of the list. The order of the list that has been ordered in such a way will be taken into account by functions that are present in many products. In cases of doubt the software gives precedence to the higher prioritized product. e.g. when there are several existing licences it will be the one from the top placed product that will be used. A detailed description of this behaviour is to be found in the Command Reference to the → **Product Manager**.

By clicking the button **[Search for Licence...]** you can configure the licence search for the currently selected product in the list. The following dialogue box appears:



After selecting the FARO Box products that you have purchased in the → **Product Manager**, the associated menus will be loaded. These can be seen in the automatically inserted tool bars or on the ribbon or the corresponding entry in the menu bar. In the case where the menu has not been automatically loaded enter one of the following commands in the AutoCAD (LT) command line:

PhoToPlan	PPMENU
TachyCAD	TCMENU
DistToPlan	DPMENU
hylaFM	HYMENU
MonuMap	MMMENU
PointSense	PCMENU

After that the tool bar and menu entry or the tab on the ribbon of the application is displayed.

Should it so one time happen that no product from the FARO Box is loaded, you can always start the → **Product Manager** from the command line of AutoCAD (LT) (command: KUBT\_CONFIG\_PRODUCTS), so long as a current version of FARO Box is loaded (see also → **Version Manager**).

## 2.5.2 Ribbon or classic menu

Since version 2009 AutoCAD has offered the user a user interface with the ribbon. In all previous versions the user had a main menu bar with the points File, Modify, View, etc. which has been replaced in current versions with other structured tabs and panels (a so called ribbon). In some cases it may be meaningful to additionally display the classic main menu bar, so that specific AutoCAD commands can be more quickly found.

In order to display the main menu bar we proceed as follows:

Enter the command MENUBAR in the command line.

```
Command: menubar
```

```
Enter new value for MENUBAR enter <0>: 1 (confirm with ENTER)
```

The menu bar now additionally appears above the ribbon, the one that you know from the older versions of AutoCAD.

## 2.6 Manage CodeMeter licences

### 2.6.1 Check the licence status

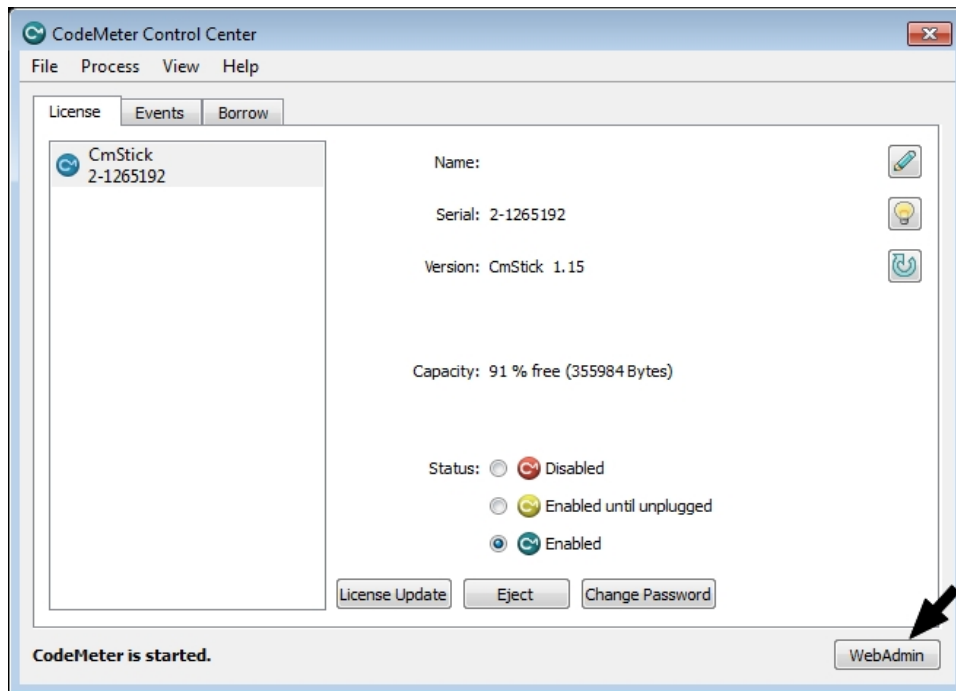
There are two ways of achieving this. The licence status of the products that are currently embedded in AutoCAD can be checked with the command → **Licence management ...** Licence management....

Independently of that you can also see the licence information of your dongle directly in the CodeMeter software. There you can see if the dongle is activated for any other software products.

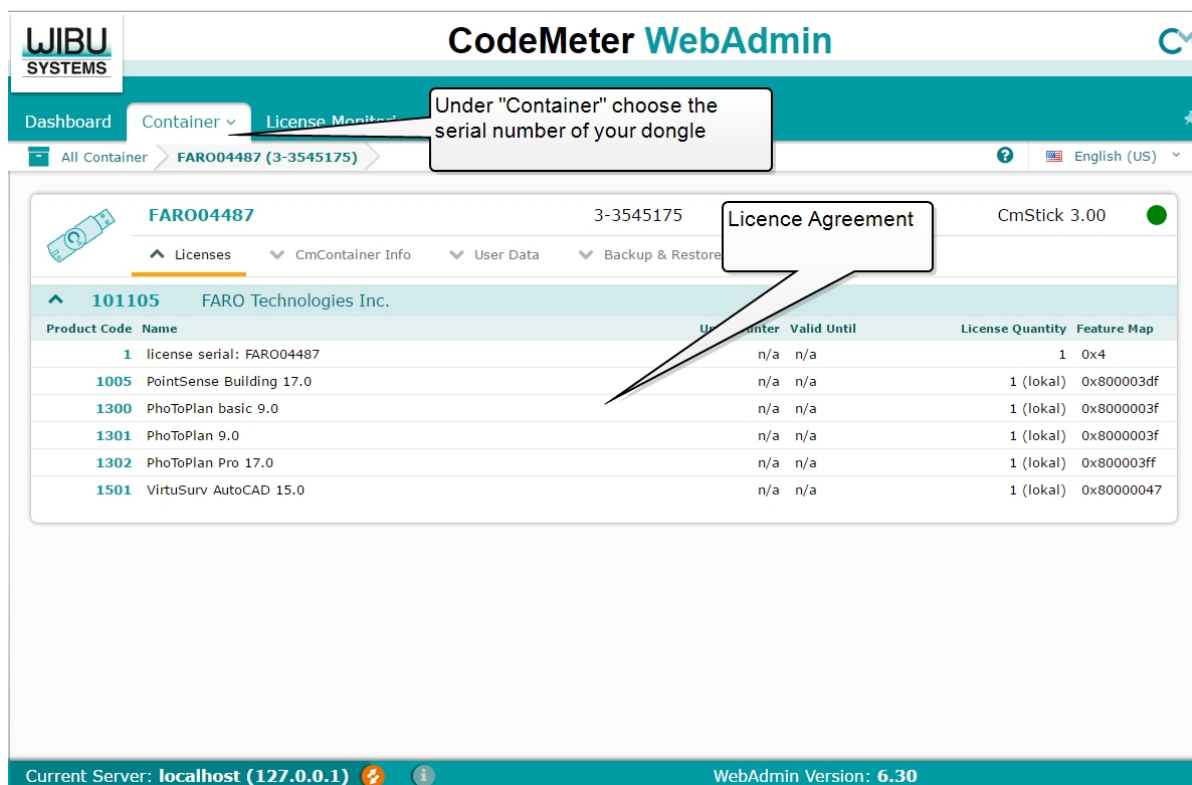
Click on the CodeMeter symbol in the task bar, extreme bottom right on your screen.



The "CodeMeter Control Center" opens. Click in this dialogue box, extreme bottom right, on the button **[WebAdmin]**.



Now the web browser is displayed on the CodeMeter WebAdmin page.



CodeMeter Network Licence	
Column name	Description
Name	You can see here, for which products and add-ons the dongle has a licence.
Unit counter	Shows how many more times the program can be used before the licence expires. Normally here is "n/a" (not applicable - unlimited number).
Valid until	With time limited licences you can see how long the licences have to run.
Licence Quantity	If you have purchased a network licence, the number of seats is displayed here. With a single seat licence here will "local" be shown.

### 2.6.2 Request an activation file

If you want to extend your licence or activate a new product, it may be required that you must send us the actual licence status of your dongle. For that a so called CodeMeter Remote Context File (WibuCmRaC) will be created and sent by email to the company FARO Technologies, Inc.. To do that, go through the following steps:

- Start the CodeMeter Control Center by clicking on the CodeMeter symbol in the task bar, extreme bottom right on your screen.



- Now click on the button **[Licence Update]** to start the CmFAS Assistant. Click on the button **[Next >]**.
- Now select the option "Create licence request" and click on **[Next >]**.
- In the next step select the option "Extend existing licence" and click on **[Next >]**.
- Select the entry "FARO Technologies Inc.(101105)" when asked for the software vendor. Then click on **[Next >]**.
- Select a place to save the licence request file. As default the desktop folder is suggested. Then click on **[Commit >]**.
- Finally a message is displayed informing you that the CodeMeter licence request file has been successfully created.

- Now send this file to FARO Technologies, Inc. ( [License3DS@faro.com](mailto:License3DS@faro.com) ) and you will promptly receive an update file for the licence activation (see the following section).

### 2.6.3 Licence activation / update

For extending or updating your licence you will receive a licence file from FARO Technologies, Inc.. With the help of this file the new licence will be activated and saved on your dongle. Proceed as follows:

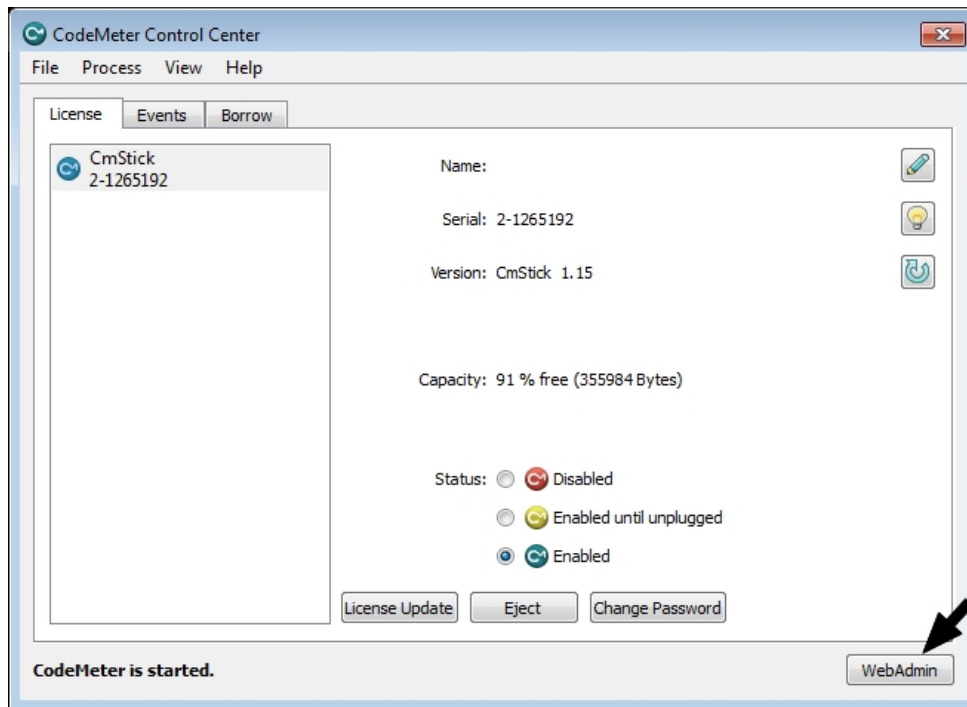
- Save the file on your local hard disk drive, e.g. on the desktop.
- In the situation where this is compressed file (ZIP) first decompress the file, otherwise this step is omitted. You should now have before you a licence file with the extension .WibuCmRaU.
- Double click the licence file (left mouse button).
- A message is displayed that asks if you want to write the new information/new content to your CmStick. Answer with **[Yes]**. The successful activation will be shortly confirmed.
- It is recommended that in connection with the activation the verified time clock of your dongle is also updated. The procedure is to be found in the following section.

### 2.6.4 Verifying the time clock of the dongle

An internet connection is required. Open the CodeMeter Control Center.

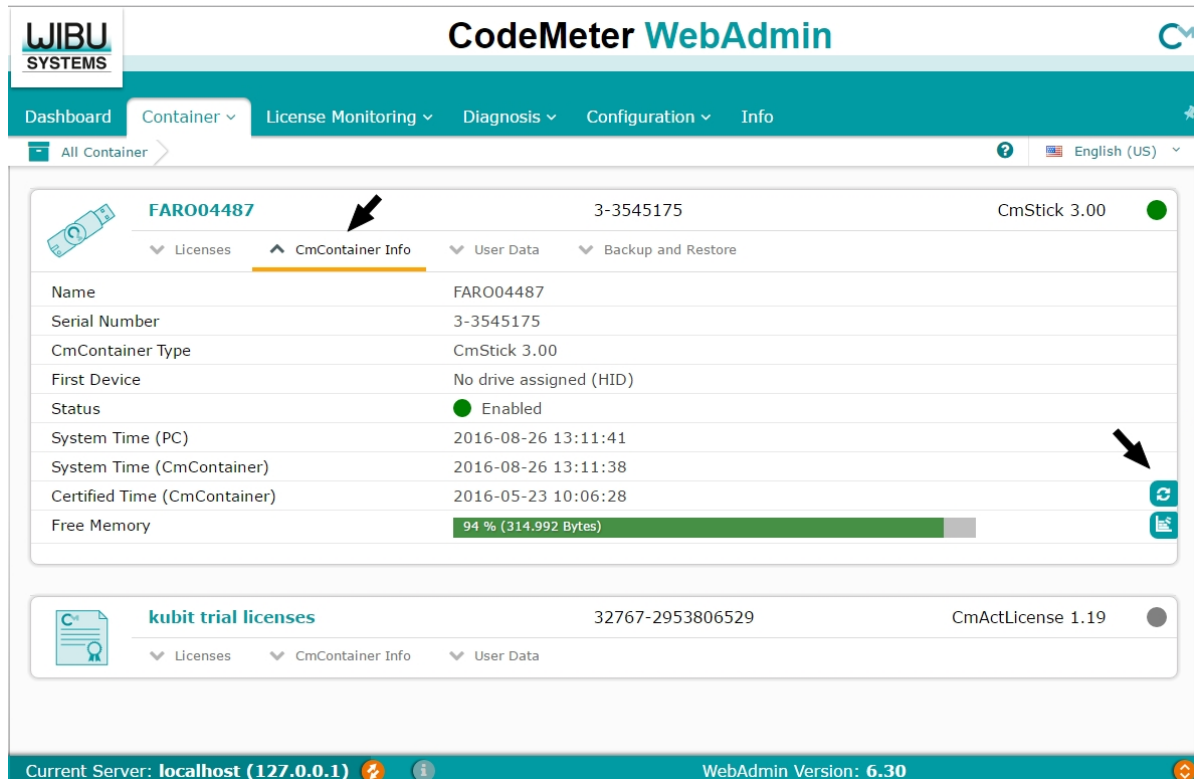


The "CodeMeter Control Center" opens. Click in this dialogue box, extreme bottom right, on the button **[WebAdmin]**.



Now the web browser is displayed on the CodeMeter WebAdmin page.

In WebAdmin open the tab **"Container"** and click on **"CmContainer Infos"**. Click on the **update icon** behind the entry for the certified time.



## 3 FARO Box Command Reference

All of the commands that are relevant for managing and configuring your FARO Box installation, are listed in the Command Reference. The commands are to be found on each of the FARO Box products' tabs in the ribbon. The description of every command starts with a small header block with the following structure:

### Ribbon tab text

Button

Command name:

COMMAND NAME

### Ribbon tab text

Under this nomenclature is to be found the command text used in the ribbon tab for this FARO Box product.

### Button

You can call the command by clicking the button icon shown here in one of the tool bars or ribbon tabs for the FARO Box product.

### Command name

The command name is to be found here that can be entered in the AutoCAD command line.



## Getting Started ...



Command name:

KUBT\_GETTING\_STARTED

This command opens a dialogue box, from which you have access to tutorials, videos and further information to the activated FARO Box products:



Select the desired product from the side menu. In the information pane that appears on the left are links to web sites with videos and sample files, which are available for download.

You can request a trial version of your selected product by clicking the button **[Request a trial ...]**. The button only appears only for products for which no licence was found.

The “Getting Started” dialogue box appears by default when starting AutoCAD. By selecting the option “Show this dialog at startup” you can switch off this behaviour for the currently installed program version.

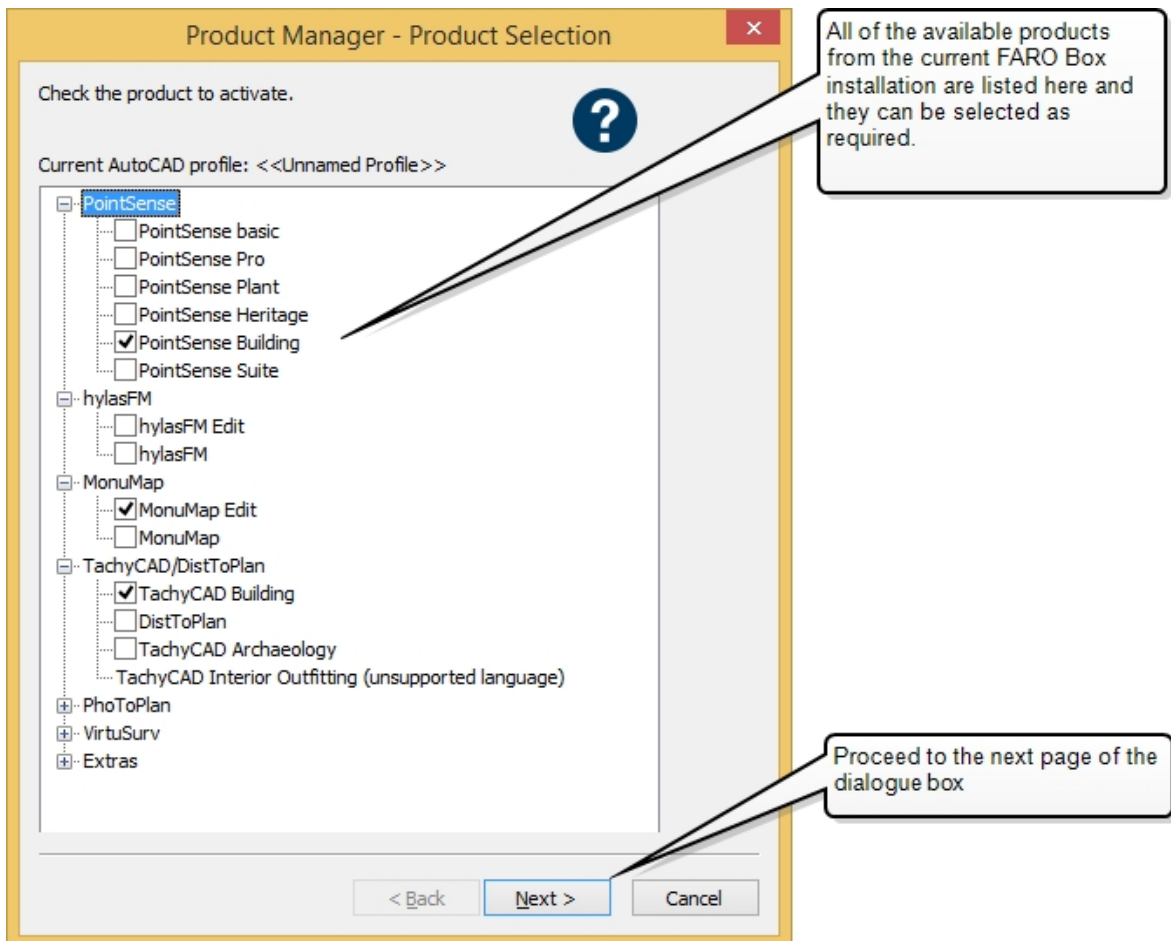
## Product Manager



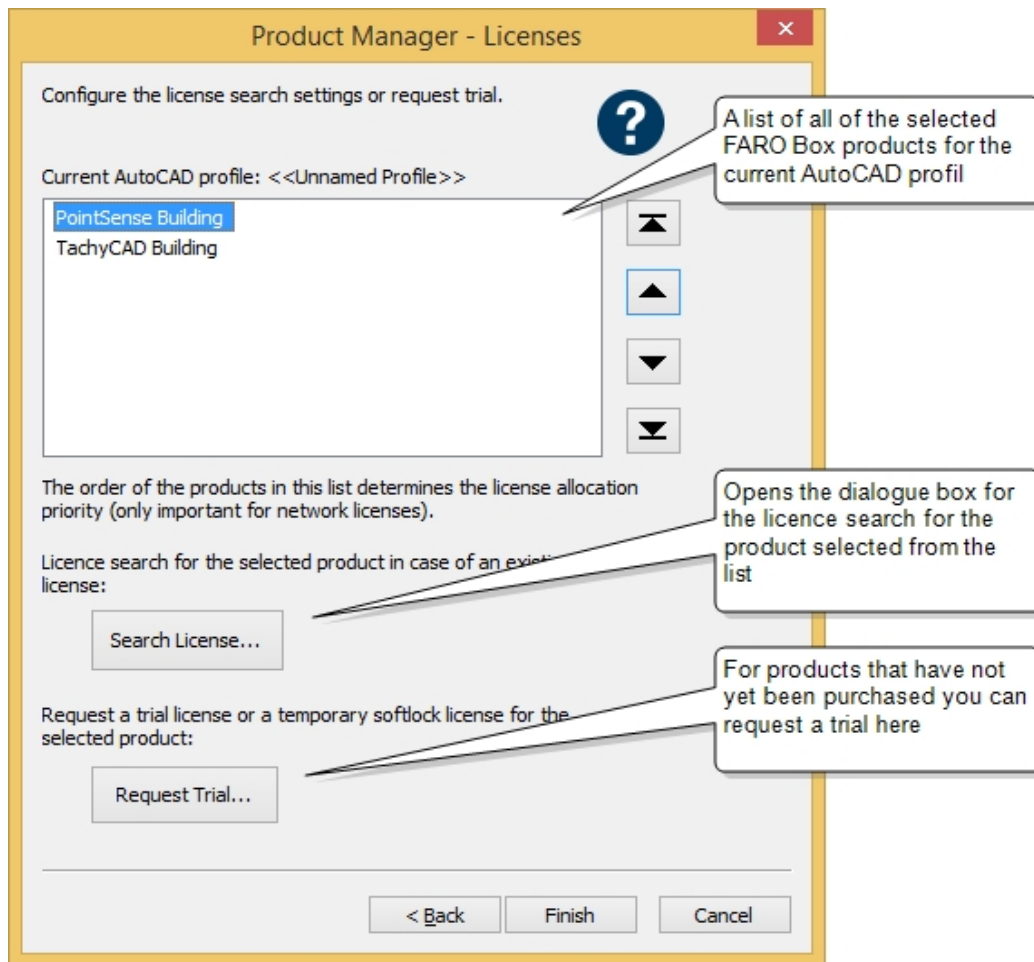
Command name:

KUBT\_CONFIG\_PRODUCTS

This command opens the Product Manager, where the FARO Box products can be selected with which you intended to work.



Multiple products can be simultaneously selected from the product list. If you have not yet purchased a licence for a specific product, but you would like to test it, then it is possible to select this product and from the second page of the Product Manager to request a trial. If you work with multiple AutoCAD profiles then it is possible to embed different products in each profile. By clicking the button **[Next >]** you proceed to the second page of the Product Configurator.



In the pick list you will find all of the FARO Box products that you have selected for the current AutoCAD profile. The order of the products in the list can be changed by using the buttons to the right of the list. The order of the list that has been ordered in such a way will be taken into account by functions that are present in many products. In cases of doubt the software gives precedence to the higher prioritized product. That has two consequences:

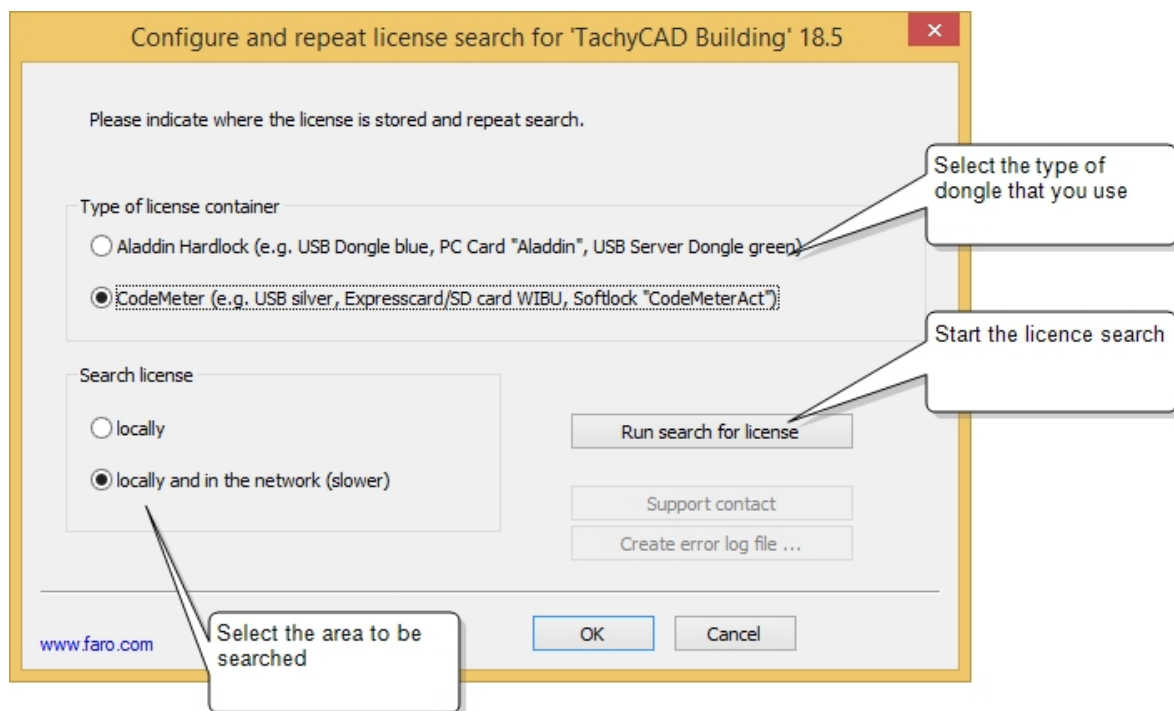
- Should a command be found in two products, but each with different options, the options that will be displayed will be those that belong to product that is higher up in the list.
- Where there are several licences - on one or more network dongles - the order of the products is determined by which licence has been given precedence. This licence is then no longer available in the network for other users to use until this AutoCAD session is ended or that it has been manually released (see below). An example thereto:

You have purchased a PointSense basic licence and a PointSense Building licence and you want to work with both products on two different computers. Both licences are to be found on a single network dongle. In the Product Manager on both computers you have entered PointSense Building as the first product in the list. If you now start a command

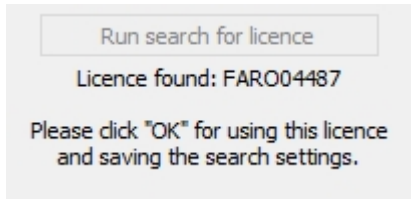
on the first computer that exists in both products (e.g. Slice define (UCS)), then the licence will be reserved for PointSense Building. Then on the second computer there is only the command available from the PointSense basic licence, even when the settings of both Product Managers are identical.

But you can also configure the settings differently, so that on the first computer, the PointSense basic licence is the one that will always be the first to be reserved (first position in the list) and on the second computer the PointSense Building licence. Should the occasion arise where the second computer is not being used, then the second computer can use the PointSense Building licence. In this situation the licences will be reserved in the order that they appear in the list. So that when a general PointSense command is called (e.g. Slice define (UCS)) it will be the PointSense basic licence that will be reserved. Should thereafter a PointSense Building command be called then this licence will also be reserved. In such a situation, to be able to work on the second computer, it is possible during an AutoCAD session to check out the dongle from the first computer from → **Licence management ...** . Now both licences are available and can be used by both computers in the order of the selected priority.

By clicking the button **[Search for Licence...]** you can configure the licence search for the currently selected product in the list. The following dialogue box appears:



Next choose the memory type that is being used (Aladdin Hardlock or CodeMeter) and then the licence search area ("local" or "local and in the network(slower)"). By clicking the button [Run search for licence] you can check if a licence has been found that meets the settings used:



You can also find information about setting up a network licence in section **2.4** .

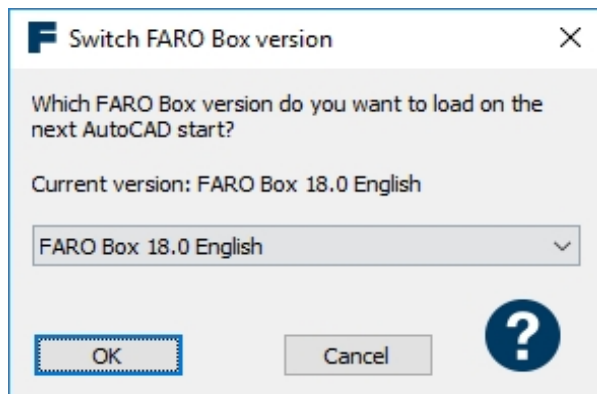
## Version Manager



Command name:

KUBT\_SELECT\_KUBIT\_BOX\_VERSION

If you have more than one FARO Box version installed on your computer, you can select in the Version Manager with which version you want to work. After calling the command the following dialogue box is displayed:



You can select the appropriate version from the pick list or remove the currently loaded version (Select "**None (unload current version)**"). After confirming the selection with **[OK]**, you will be prompted to restart AutoCAD so that the changes can take effect.

Should you ever have completely unloaded FARO Box, then none of the FARO commands will be able to be called from the AutoCAD menus and ribbon tabs. If this should be the case, you will only be able to start the Version Manager from the AutoCAD command line, to reload a version of the FARO Box. Enter KUBT\_SELECT\_KUBIT\_BOX\_VERSION.

## Licence management ...



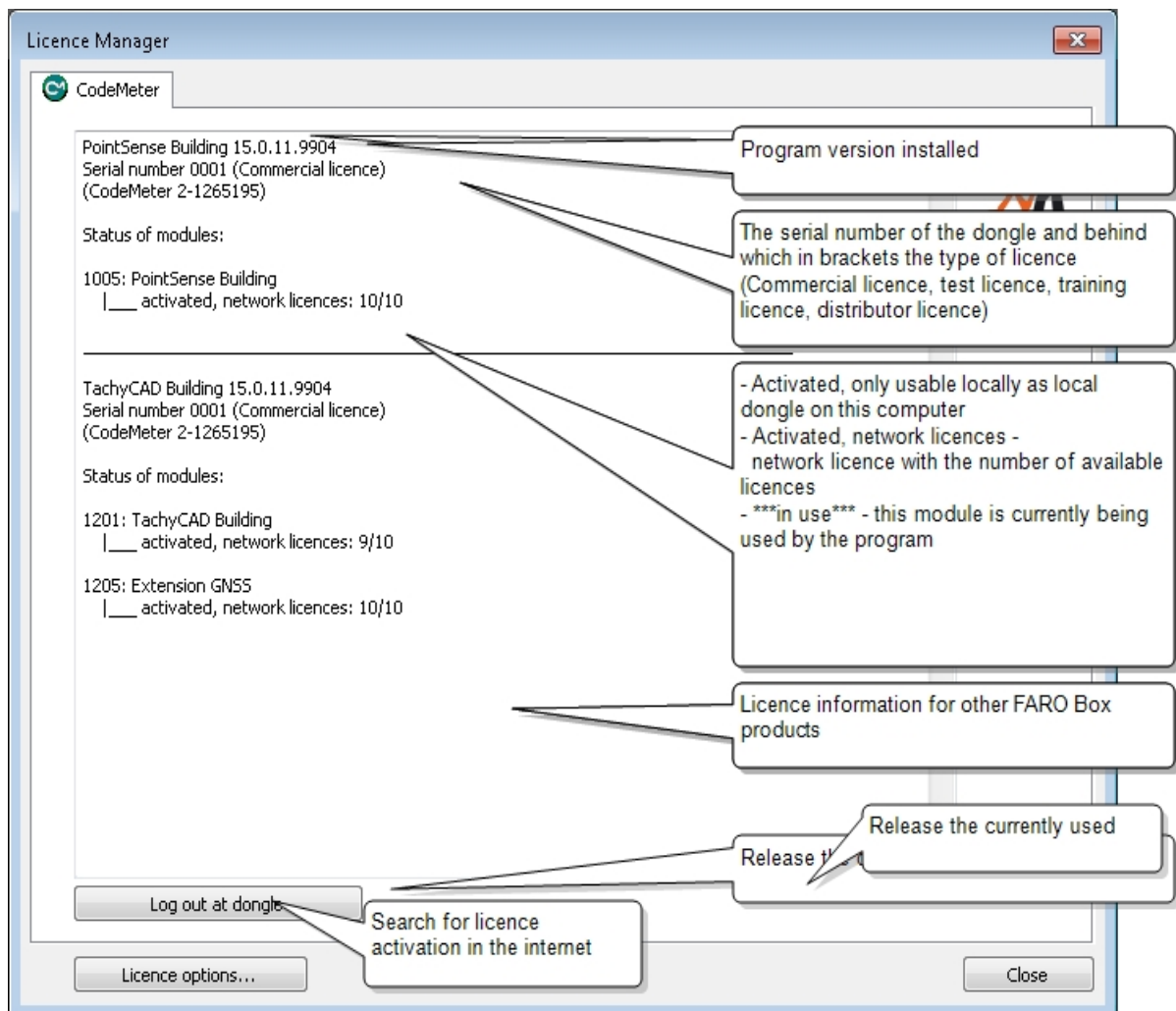
Command name:

KUBT\_SHOW\_LICENCE\_INFO

This command shows you the state of the licences for your FARO products.

Depending on the type of dongle being used, the dialogue box that is displayed will also vary.

### CodeMeter dongle



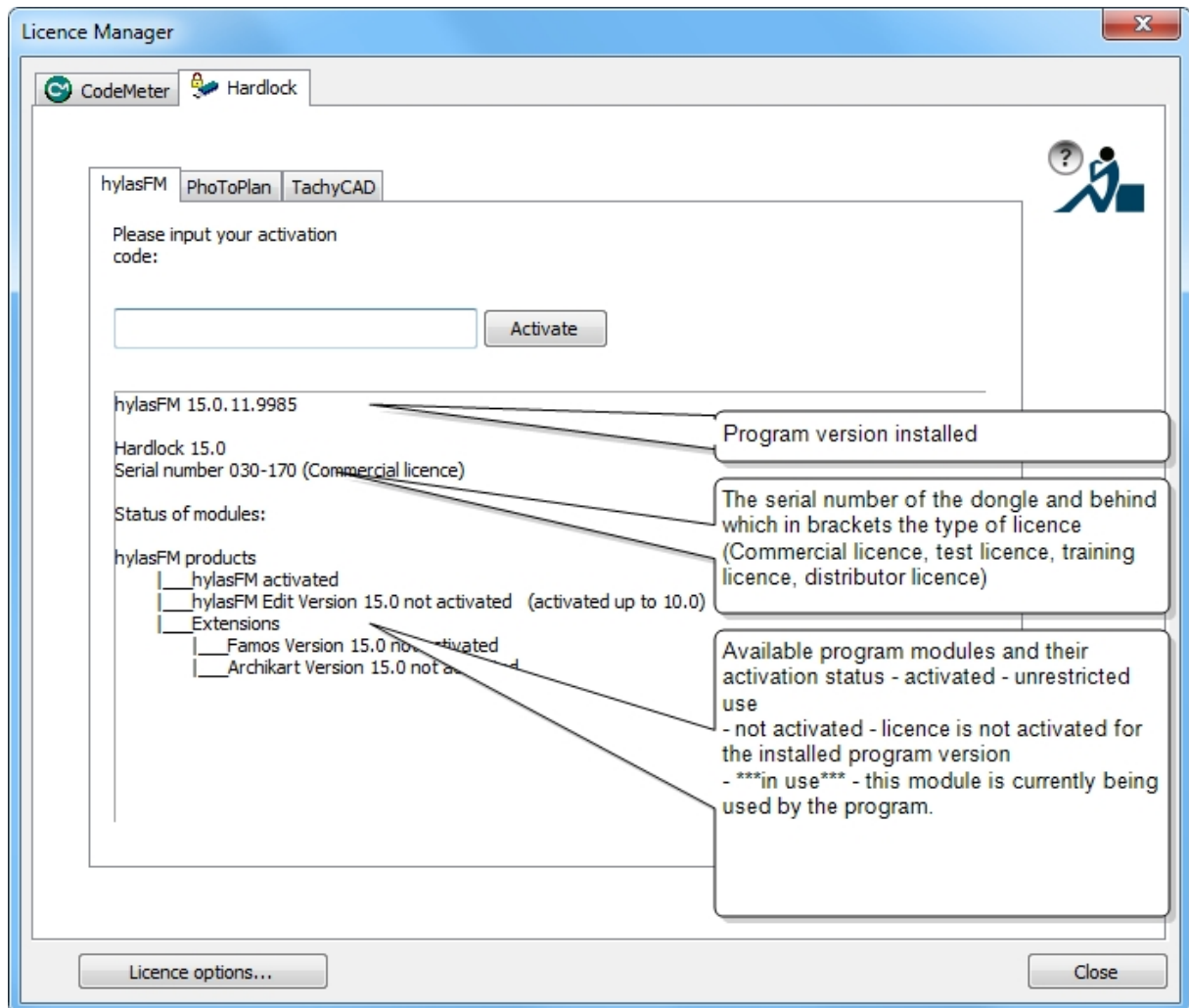
This dialogue box is purely for information purposes. To make changes to your licences (e.g. request a trial, search for licences, release network licences etc.), use the following command

→ **Product Manager**.

By clicking the button **[Log out a Dongle]** you can release the currently used licences, so that they can, for example in the case of a network dongle, be used by other computers in the network. The licence will again be reserved as soon as you call another FARO command, in accordance with the settings in the → **Product Manager**.

## Hardlock Dongle

Hardlock is a dongle that was delivered with earlier versions of kubit software. It only has a meaning for existing customers.



This dialogue box not only serves to show you the current status of your licences, but also allows you to activate the dongle. Enter the activation code that you have received from FARO here.

For all other licence options (request a trial and licence search) use the → **Product Manager**.



## About

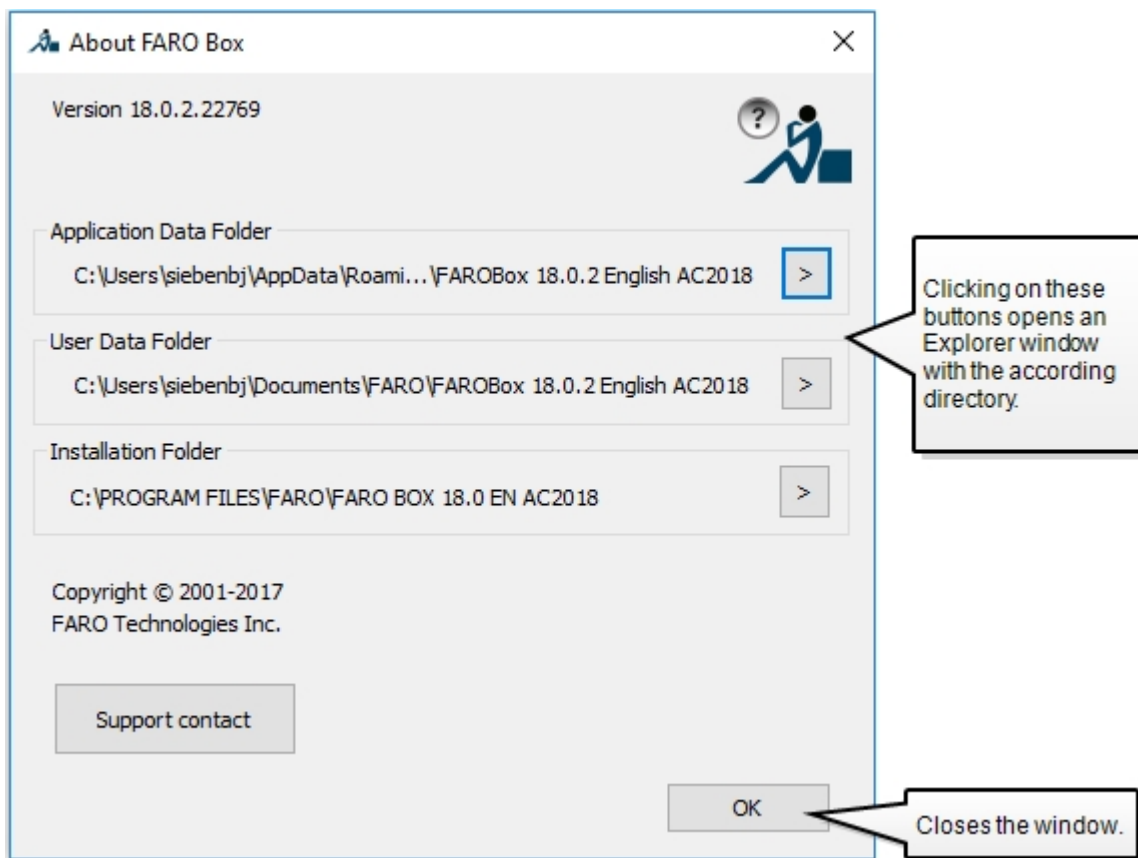


Command name:

KUBT\_ABOUT

This provides information about the current version and about important paths. Furthermore it enables the fast access to data within the most important software directories, like the application data directory, the installation directory and the directory which contains the configuration file.

The following dialogue box opens:



## 4 Licence Agreement

This is a Licence Agreement, not a Purchase Contract, between you (herein after known as the "Licensee") and FARO Technologies, Inc. (herein after known as the "Licensor" or "FARO"). By the opening of the sealed program package you are agreeing to the conditions of this Agreement. The rights to use, transfer and copy are limited by this Agreement.

### 1. Subject of this Agreement

The subject of this Agreement is the licensing of a FARO software package. It is delivered to the Licensee in the form of a software program. The Licensee is not entitled to claim the source code. The software package also includes a disc, manual and software copy protection.

The parties to this Agreement hereby agree that the program is eligible for protection and of being protected under copyright law. The Licensor or any third party have intellectual property rights on the goods supplied. So far as any third party is entitled to the rights, the Licensor has the appropriate rights of use.

### 2. Scope of Use

The Licensee is hereby granted for the duration of this Agreement the simple non-exclusive and personal right (licence) to use the computer programs on the disc subject to the following conditions.

The licence for the software may not be used by the Licensee at any one point in time on more than a single computer.

The Licensee has the right to make a backup copy of the programs. The program package and the company names, trade marks and copyright notices contained therein, must not be changed or altered in any way or manner. The Licensee is not entitled, in any way or form, to copy or otherwise duplicate the software and the written material, in whole or in part in its original or in any form merged with or embedded in any other software.

The Licensee hereby agrees not to disassemble or have disassembled the programs or any part thereof. Should the Licensee require information on how to achieve interoperability, then it will be supplied by the Licensor. Likewise it is not allowed to translate the written material or to amend or to produce derivative works there from.

The Licensee is not entitled to remove the software copy protection that is bound to the software or to bypass it in any other way.

The Licensee has to ensure that no programs, documentation or duplicates thereof can be accessed by any third party without the express permission of the Licensor. In particular the Licensee is not allowed, without the express permission of the Licensor, to transfer, to rent or to loan the software to any third party. Basically, a transfer is only possible if the third party has declared to comply with the terms and conditions of this Agreement. This must be expressly

pointed out to the third party. With an approved transfer all the rights of use of the transferor are forfeited.

Any further use is prohibited.

### **3. Warranty**

The software has been developed with due care and diligence and with regard to accepted programming methods. With the currently best available technology it is not possible to completely rule out errors in the development of the software.

The Licensor accepts no liability for any errors and does not guarantee the specific suitability of the software to meet the Licensee's requirements. The responsibility for the correct choice of and the consequences arising from the use of the software as well as the intended or achieved results lies solely with the Licensee. Warranty claims are excluded, to the extent allowed by law.

The Licensor is in particular not liable for any indirect damages or any consequential damages caused by errors or defects in the licensed software. There shall be no limitation of liability for wilful intent, gross negligence and guaranteed quality.

### **4. Loss of the Dongle**

FARO products are protected by a dongle. The dongle contains complete licensing information. Therefore your licence is irremovably embedded in your dongle. If the dongle is lost the Licensee is obligated to promptly report the loss of the dongle to FARO (Licensor). The dongle (the licence) will not be replaced by FARO.

### **5. Duration of the Agreement**

This Agreement is open ended (none expiring). The Licensee's rights to use the software will automatically expire without notice, if he breaks any one of the conditions of this Agreement. Upon expiration of the right to use following a breach of this Agreement the Licensee is obligated to destroy all parts of the program package supplied with this licence, together with all copies including any modified copies.

### **6. Final Provisions**

Should one or more of the provisions of this Agreement be or become invalid, or should the Agreement contain an omission, all of the remaining provisions shall retain their legal effectiveness. The parties agree that the invalid provision shall be replaced by a valid provision that comes closest to the commercial effect intended by the parties hereto.

Any change to this Agreement must be made in writing. There are no ancillary verbal agreements.

This Agreement shall be subject to the laws of the United States of America. The executive place of jurisdiction for all disputes under this Agreement shall be the state of Florida, USA.

**Supplementary Provisions for Use with AutoCAD LT**

FARO Software uses LTX under licence from ManuSoft (<http://www.manusoft.com>) for the required software support, to be able to load and run FARO Software from within AutoCAD LT®. You are hereby granted permission to use for an unlimited period of time, the software LTX as an integral part of the FARO Software. However permission has only been granted exclusively for the use of LTX in connection with the FARO Software or which it has been developed, planned and approved. Any other use of the LTX files is expressly prohibited, and every violation of this Licence Agreement will be prosecuted to the full extent that the law provides. Neither ManuSoft nor any possible heir or legal successor guarantees implicitly or explicitly the applicability or the freedom from defects of LTX when used by the end user or any third party. ManuSoft disclaims all liability for any direct, indirect, special, incidental or consequential damages in any connection with LTX.