



MonuMap 18.0 – What's new?

Release April 2017



MonuMap 18.0 Compatibility

Operating systems:

- According to the system requirements of AutoCAD®
Windows® 10, 8.1, 8, 7

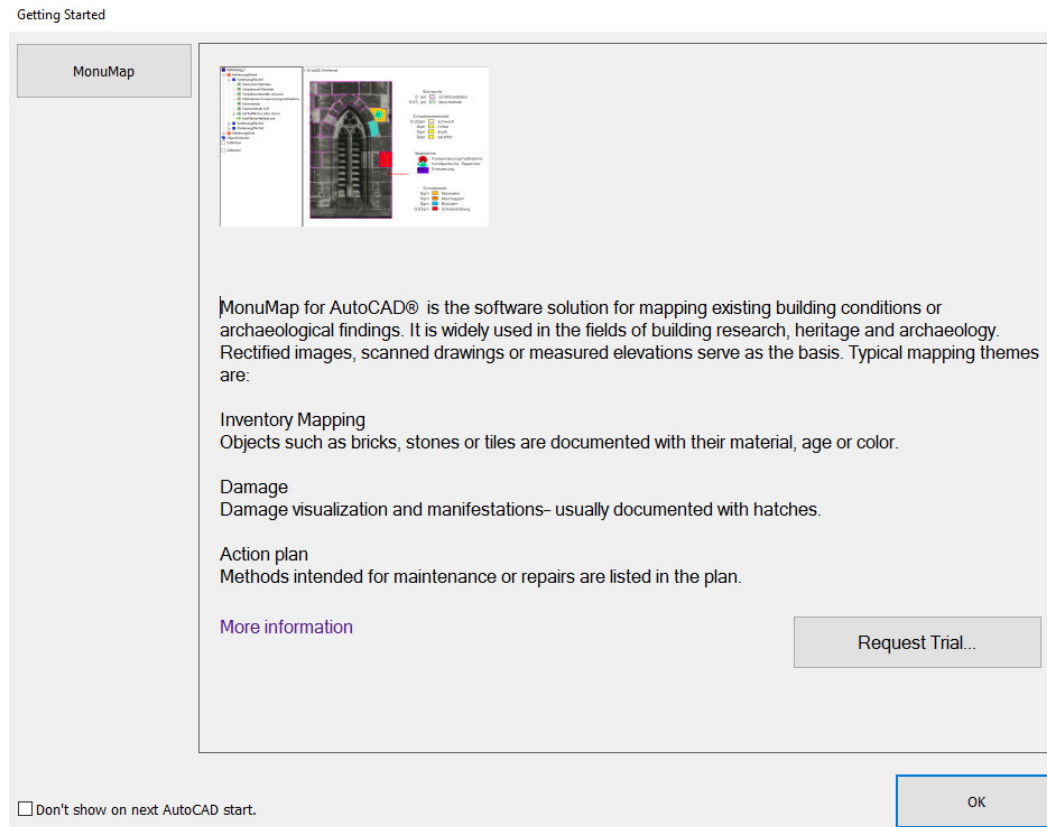


Compatible with AutoCAD®:

- Support for AutoCAD® 2018 and AutoCAD® LT 2018 64 bit
- Support for all AutoCAD® 2018 based Autodesk® products, e.g.
 - Architecture 2018, Civil 3D 2018
- Supports older versions of AutoCAD® (LT) from 2015
- Earlier releases can be made available for even older systems



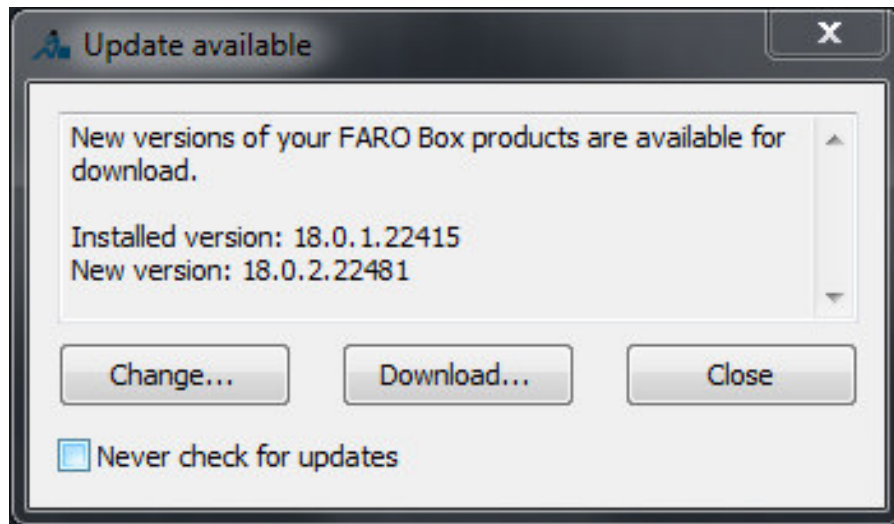
New Getting Started Screen



- MonuMap 18.0 provides a new “Getting Started Screen” pointing to further self-learning material for the software, such as:

- Tutorial
- Videos
- Tips & Tricks

Automatic software update notification



- Users are now automatically notified, when a newer version of MonuMap is available for download
- MonuMap is part of the FARO Box Plug'ins for AutoCAD®