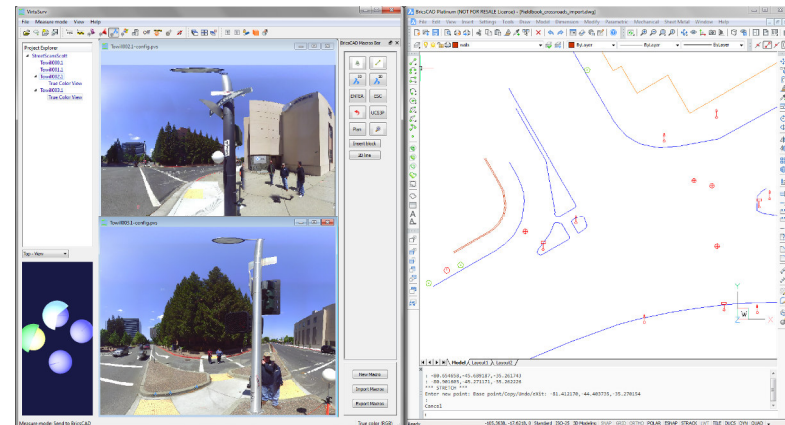




VirtuSurv 18.0 – What's new?

Release April 2017



VirtuSurv 18.0 Compatibility

Operating systems:

- Windows® 10, 8.1, 8, 7
- 64 bit



Directly supported CAD:

- Support of AutoCAD® 2015-2018 and AutoCAD® LT 2015-2018 64 bit
- Support of all AutoCAD® 2018 based Autodesk® products, e.g.
 - Plant 3D 2018, Architecture 2018, Civil 3D 2018
- BricsCAD version 14 to 17 64 bit
- SEMA version 15 (CAD for timber work)

Further CAD per generic Windows link and field book:

- Rhino 3D, IntelliCAD (GStarCAD, etc.)
- Geograf, Covadis, Carlson and many more

