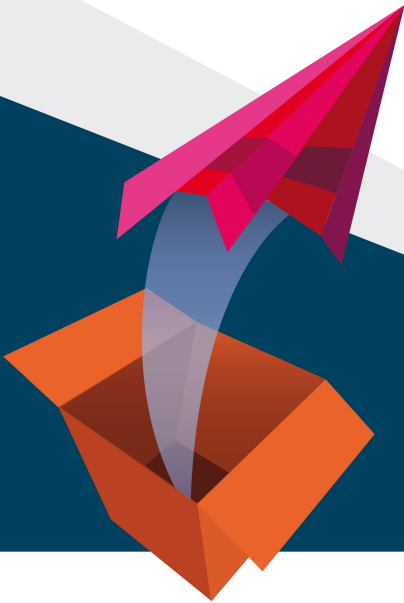


# Quick Install Guide



**FARO**®



- The dongle contains your licence, please handle with care.
- Loss of dongle means loss of licence.
- Replacement of damaged dongles will incur additional costs.

In case of damage or loss please contact:

**support@faroeurope.com**

or

**3DSupportUSA@faro.com**

## **Dear user,**

You have received a FARO Software Box containing the following:

- Dongle as software protection
- USB stick with all of the products manuals and an installation guide
- Quick Installation Guide

This Quick Installation Guide will lead you through all of the necessary steps, to allow you to start your new software:

1. Download of the newest version of the software
2. Installation and setting up of the software in AutoCAD (LT) / Revit
3. Download your licence activation file and installing it on the dongle

After that your software is ready to be used.

We wish you lots of enjoyment and pleasure when working with your FARO 3D software product.

# Contents

---

System requirements .....	5
kubit Box .....	5
VirtuSurv .....	6
PointSense for Revit .....	6
Installation and Start .....	7
Installation of the kubit Box .....	7
Installation of VirtuSurv .....	12
Installation of PointSense for Revit .....	14
Installing the dongle .....	15
What's to do next? .....	18
Manuals .....	19
Problems? .....	20
Legal notices .....	21
Contact .....	22

# System requirements

## kubit Box

The programs DistToPlan, TachyCAD, PhoToPlan, hylasFM, MonuMap and PointSense are all part of the **kubit Box** and can be embedded as **AutoCAD** applications in the following versions of AutoCAD:

	<b>AutoCAD 2013-2017</b>	<b>AutoCAD LT 2013-2017</b>
DistToPlan	✓	✓
TachyCAD	✓	✓
PhoToPlan	✓	✓
hylasFM	✓	✓
MonuMap	✓	✓
PointSense	✓	⊗

The kubit Box supports the following **operating systems**:

Windows XP / Vista / 7 / 8 / 8.1 / 10 (32 or 64 bit)

Please take note that we cannot offer any support for combinations of a AutoCAD version and an operating system which are **not** supported by Autodesk.

## **VirtuSurv**

The software **VirtuSurv** is a stand-alone **Windows program**, which can work together with - along with other Windows programs - AutoCAD (LT) 2013-2017 or BricsCAD V13 (32 bit) - V16 (32 bit and 64 bit).

VirtuSurv supports the following **operating systems**:

Windows XP / Vista / 7 / 8 / 8.1 / 10 (64 bit)

## **PointSense for Revit**

The software **PointSense for Revit** is a **Revit application** and can be installed for Revit 2015 - 2017. You can use the Autodesk products Revit Architecture, Revit MEP, Revit Structure or the complete Revit version from the Building Design Suite.

You need the **operating system**, Windows 7, 8, 8.1 or 10 in the 64-bit version.

Please take note that we cannot offer any support for combinations of a Revit version and an operating system which are **not** supported by Autodesk.

# Installation and Start

The installation of the software consists of a number of steps which have to be carried out in sequence. Administrator privileges are required for the installation.

**Note:** Please ensure that the hardware protection (CodeMeter dongle) that you have already received is **not** yet plugged in, as it can lead to problems when trying to identify the hardware.



CodeMeter  
USB stick



CodeMeter  
Mini USB stick



CodeMeter  
ExpressCard

Examples of the CodeMeter dongle

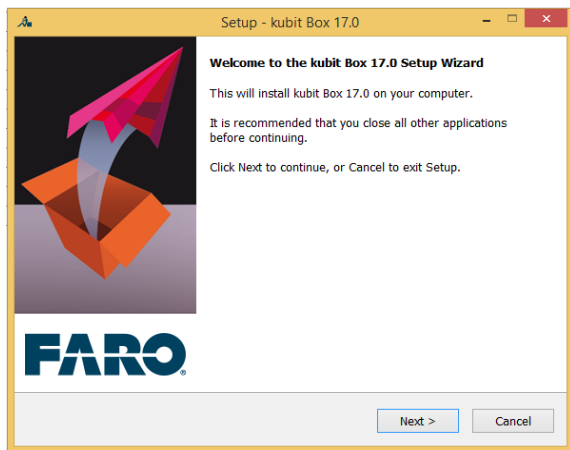
## Installation of the kubit Box

The current setup files of the kubit Box products can be downloaded from the FARO 3D Software internet

site:

[www.faro-3d-software.com](http://www.faro-3d-software.com)

Run the setup file by double clicking it and then follow the instructions of the installation wizard.



During the installation process you will be requested to select the AutoCAD version for which you want to install the kubit Box.

Should you want to install several versions **of a** kubit Box, you must create a separate folder for each version. Thereby you can use different versions (e.g. for AutoCAD 2013 and 2016) in parallel. The setup wizard helps you to do this.



When you want to use several FARO AutoCAD applications of the same version in a single AutoCAD session you can embed them in your AutoCAD (LT) from the

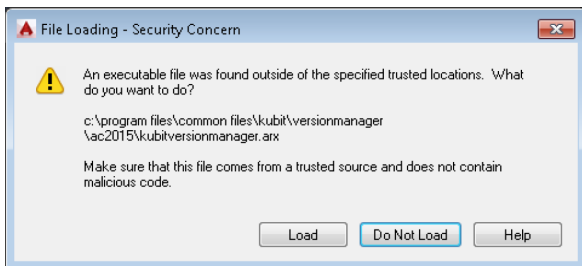
## **Product Manager**

by using the application command (KUBT\_CONFIG\_PRODUCTS). A new installation of the kubit Box is not necessary. You can find further information in the **kubit Box Installation Guide**.

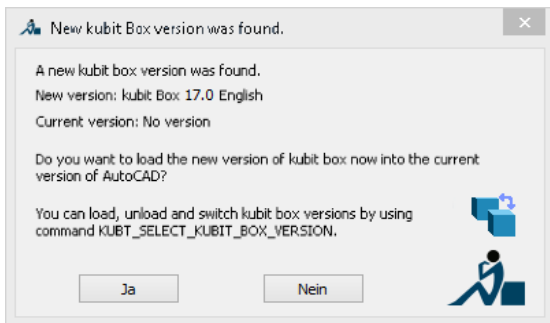
### ***Setting up the kubit Box in AutoCAD and AutoCAD LT***

In the situation where you already have previous versions of kubit applications older than **Version 15** installed on your computer, first remove them from your AutoCAD (LT) environment. Please read the corresponding section in the **kubit Box Installation Guide**.

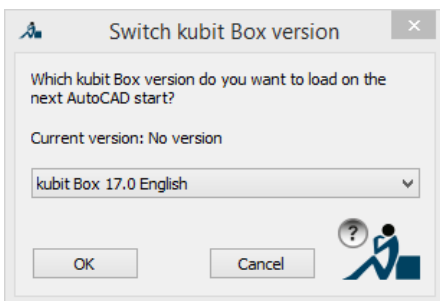
After a successful installation you can start AutoCAD (LT). Should the following security message be displayed you can simply confirm it by clicking **[Load]**.



Should a message be displayed saying that a new kubit Box version has been found and asks if you want to load it, Confirm the message with **[Yes]**.



Should the message not be automatically displayed then enter the command "KUBT\_SELECT\_KUBIT\_BOX\_VERSION" in the AutoCAD (LT) command line. The following dialogue box appears:



Select which version of the kubit Box is to be loaded and confirm it with **[OK]**. In order that changes will be effective please restart AutoCAD (LT).

Your kubit Box product has now been successfully embedded in AutoCAD (LT) and is ready to be used. The associated menus will be automatically loaded. These can be seen in the automatically inserted tool bars or on the ribbon or the corresponding entry in the menu bar.

Should the menus not have been correctly loaded, please start the **Product Manager** from the command line of AutoCAD (LT) with the command "KUBT\_CONFIG\_PRODUCTS". Read more on this in the **kubit Box Installation Guide**.

You can embed further kubit Box products into your AutoCAD (LT) by using the **Product Manager**.

## **Installation of VirtuSurv**

If you want to use VirtuSurv together with a PointSense product, you can optionally install the VirtuSurv software during the installation of PointSense.

The current setup files of VirtuSurv can be downloaded from the FARO 3D Software internet site:

[www.faro-3d-software.com](http://www.faro-3d-software.com)

Run the setup file by double clicking it and then follow the instructions of the installation wizard.

### ***First Start up of VirtuSurv***

Please, make sure the dongle is inserted in your computer and start VirtuSurv.

If you have a dongle with a valid licence, you may now start working with VirtuSurv.

If you do not have a dongle with a valid licence, you will see the **Product Manager dialogue box** when starting VirtuSurv. Here you can configure the search options for the VirtuSurv version purchased.

You can find further information in the **VirtuSruv manual**.

Without a licence you may use VirtuSurv in Viewer mode.

## Installation of PointSense for Revit

The current setup files of PointSense for Revit can be downloaded from the FARO 3D Software internet site:

[www.faro-3d-software.com](http://www.faro-3d-software.com)

Run the setup file by double clicking it and then follow the instructions of the installation wizard.

Start Revit after the installation is complete. The "PointSense" tab appears automatically in the user interface of Revit. Should this not be the case, you can also manually load PointSense for Revit into Revit. Read more on this in the **PointSense for Revit manual**.

# Installing the dongle

The FARO 3D software products are protected by a dongle against unlawful use. This so-called **CodeMeter** is available in different types:



CodeMeter  
USB stick



CodeMeter  
Mini USB stick



CodeMeter  
ExpressCard

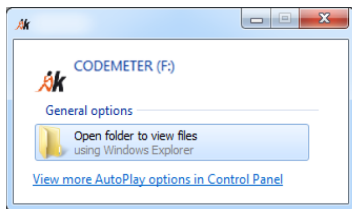
The driver software for the dongle is automatically installed during the setup.

By the delivery of the software the dongle contains no activated licence file! Please download your current licence file from the following web page:

<http://license.faro-3d-software.com/>

You can find the serial number on your dongle.

Now connect the dongle to the appropriate port for the type of dongle being used. Thereafter the message window "Auto run" might be displayed:



Close the window without selecting any option or select "Do not execute any action".

To activate the licence on the dongle, run the downloaded licence file by double clicking it.

When starting AutoCAD or Revit with an embedded application, the dongle will be automatically recognised and you can immediately start using the commands of the application.

With a perpetual licence the dongle will function without having to do anything else. For temporary licences, after a certain period of time the dongle needs brief access to the internet in order to certify its own clock time. If the dongle has connection to the web this process runs unnoticed in the background. If no internet connection is available (usually when being used in the field for a longer time) after a certain period a message pops up which prompts you to run the certification within the next X days. You now still have X days left to



connect your computer to the internet for one moment. The certification of the dongle time is done automatically when starting VirtuSurv, AutoCAD or Revit with an embedded application.

The licence status that is saved on the dongle can be accessed using the application command "**Licence management ...**".

To manage the licences saved on your dongle or to set up a **network dongle** please read the sections in the **kubit box installation guide** or **VirtuSurv** or **PointSense for Revit manual**.

## What's to do next?

The software is now completely installed. Experienced users can now immediately start work. For newcomers we recommend to read the manual (see the following section) and the respective **product tutorials**. In that way you get the first impressions of how to work with the application.

Complete explanations of the individual commands are to found in the **Command Reference** part of the manual. You can open the help topics directly from the command dialogue box by clicking on the help symbol:



## Manuals

**Each product has a comprehensive manual, which is constantly being updated and therefore exists only as a PDF file.**

To be able to view such a PDF manual you need Adobe Reader. A recent version of the Adobe Reader can be found in the FARO USB stick under Adobe Reader or get the newest version from the internet [www.adobe.com](http://www.adobe.com). You can also use alternative PDF viewers, however in such cases we cannot guarantee an error free viewing of the file.

The easiest way to open the manual is to start AutoCAD (LT), Revit or VirtuSurv and click in the **product menu** on "**Manual**".

## Problems?

Should the software not install or operate as described please contact your FARO 3D Software dealer or make contact with FARO 3D Software support:

[support@faro-europe.com](mailto:support@faro-europe.com)

<http://faro-3d-software.com/CAD/Products/Support>

## **Legal notices**

The information and guidance in this manual is currently the most up to date available. FARO 3D Software GmbH assumes no liability whatsoever for the use of this software, infringement of patent rights or rights of any third party that result from the use of this software.

FARO 3D Software GmbH reserves the right to make changes to this software, in order to bring about technical improvements in the software, at any time and without any prior notice.

No part of this documentation may at any time or in any form whatsoever be reproduced (printed, copied or the like), or edited, reproduced or distributed in any electronic system or manner without the express prior written consent of FARO 3D Software GmbH.

Release: March 2016

## **Contact**

FARO 3D Software

250 Technology Park | Lake Mary, FL 32746 USA

Phone: (800) 259-4014

Email: 3DSupportUSA@faro.com

FARO 3D Software GmbH

Tiergartenstr. 79 | D – 01219 Dresden

Hotline: +49 (0)7150 9797-400

Email: Info3DS@faro.com

## ***Trademarks***

AutoCAD, AutoCAD LT and Revit are registered trademarks of Autodesk Inc.

Bricscad™ is a registered trademark of Menhirs NV.

Stay up-to-date:

## **FARO maintenance**

Get the latest product version and benefit from the following advantages:

- compatibility with the current AutoCAD and Revit releases
- increased efficiency by the use of new features
- price advantage compared to updates

Improvements of the current program release:

## **up-to-date setups**

Visit the support section of our website to get the newest setups with improvements and bugfixes:

**[www.faro-3d-software.com](http://www.faro-3d-software.com)**



[www.FARO-3D-Software.de](http://www.FARO-3D-Software.de)

[www.FARO-3D-Software.com](http://www.FARO-3D-Software.com)